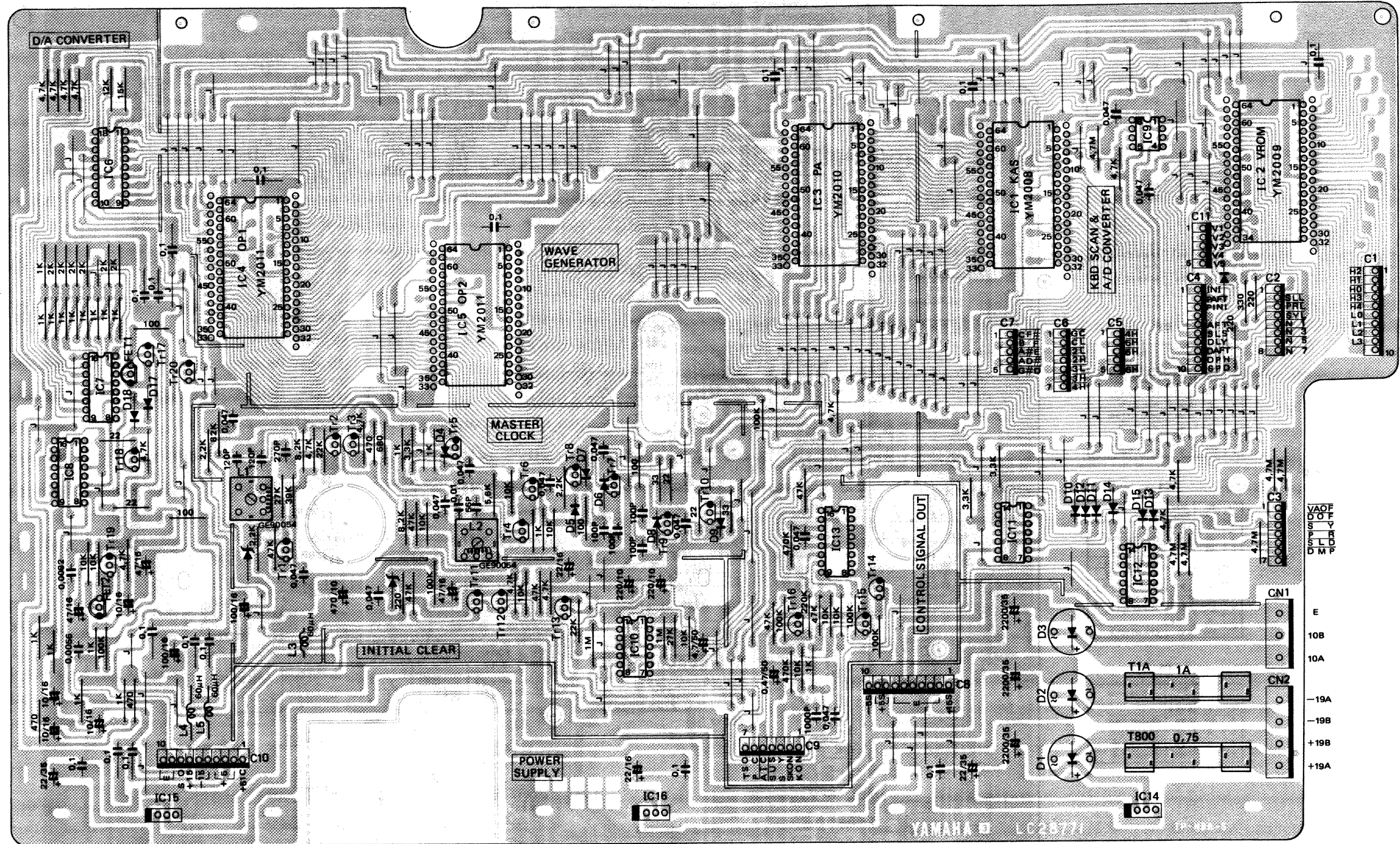


DM



View from the printed pattern side of the circuit board.

C1			
Pin No.	Pin Name	Wire Color	Destination
1	H2	VI	CPB-H2 (C1-8)
2	HT	BE	CPB-HT (C1-7)
3	H0	GR	CPB-H0 (C1-6)
4	H3	GY	CPB-H3 (C1-9)
5	H4	WH	CPB-H4 (C1-5)
6	L0	BR	CPB-L0 (C1-4)
7	L1	RE	CPB-L1 (C1-3)
8	L2	OR	CPB-L2 (C1-2)
9	L3	YE	CPB-L3 (C1-1)
10	-	-	-

C2			
Pin No.	Pin Name	Wire Color	Destination
1	Vss	-	-
2	SLL	RE	SCS-SLL (C1-5)
3	PRL	OR	CPB-PRL (C2-5)
4	SYL	YE	CPB-SYL (C2-6)
5	N1	VI	CPB-N1 (C3-1)
6	N3	GY	CPB-N3 (C3-2)
7	N5	WH	CPB-N5 (C3-3)
8	N7	GG	CPB-N7 (C3-4)

C3			
Pin No.	Pin Name	Wire Color	Destination
1	VAOP	PK	CPA-VAOP (C2-7)
2	DOF	GG	CPA-DOF (C1-5)
3	SY	GR	CPB-SY (C2-3)
4	PR	BE	CPB-PR (C2-4)
5	SLO	VI	SCS-SLO (C1-7)
6	DMP	GY	JK-DMP (C1-1)
7	Vss	-	-

C4			
Pin No.	Pin Name	Wire Color	Destination
1	INI	VI	CPA-INI (C2-2)
2	PAFT	GY	CPA-PAFT (C2-6)
3	PINI	WH	CPA-PINI (C2-3)
4	-	-	-
5	AFT	BE	CPA-AFT (C2-5)
6	SLS	GR	SCS-SLS (C1-2)
7	DLY	YE	CPA-DLY (C1-8)
8	VAFT	OR	CPA-VAFT (C2-4)
9	DPH	RE	CPA-DPH (C1-6)
10	SPD	BR	CPA-SPD (C1-7)

C5			
Pin No.	Pin Name	Wire Color	Destination
1	4H	BE	MK-4H (C1-4)
2	5L	VI	CPB-5L (C4-7)
3	5H	GY	CPB-5H (C4-9)
4	6L	WH	MK-6L (C1-7)
5	6H	GG	MK-6H (C1-8)

C6			
Pin No.	Pin Name	Wire Color	Destination
1	GC#	PK	MK-GC# (C2-2)
2	CL	SB	MK-CL (C2-1)
3	2L	BR	CPB-2L (C4-1)
4	2H	RE	CPB-2H (C4-2)
5	3L	OR	CPB-3L (C4-3)
6	3H	YE	CPB-3H (C4-5)
7	4L	GR	MK-4L (C1-3)

C7			
Pin No.	Pin Name	Wire Color	Destination
1	CF#	VI	MK-CF# (C2-7)
2	BF	BE	MK-BF (C2-6)
3	A#E	GR	MK-A#E (C2-5)
4	AD#	YE	MK-AD# (C2-4)
5	G#D	OR	MK-G#D (C2-3)

C8			
Pin No.	Pin Name	Wire Color	Destination
1	+15S	VI	PSW-+15S (C1-7)
2	E	BL	PSW-EC (C1-1)
3	E	BL	SA-EC (C1-1)
4	E	BL	SA-E (C2-5)
5	E	BL	SA-E (C2-6)
6	E	BL	CPB-EC (C2-7)
7	E	BL	MK-EP
8	+5S	YE	PSW-+5S (C2-2)
9	+5S	YE	PSW-+5S (C2-3)
10	-15S	BR	PSW- -15S (C1-2)

C9			
Pin No.	Pin Name	Wire Color	Destination
1	KON	GY	SA-KON (C4-6)
2	SKON	BR	CPA-SKON (C2-9)
3	SY	YE	SA-SY (C4-3)
4	SUS	SB	SA-SUS (C4-4)
5	AIC	WH	SA-AIC (C3-1)
6	PC	GG	CPA-PC (C3-1)
7	TS	BE	TS-TSO (C1-3)

C10			
Pin No.	Pin Name	Wire Color	Destination
1	+5IC	OR	PSW-+5IC (C2-1)
2	+5	OR	PSW-+5 (C2-4)
3	+5	OR	CPB-+5 (C2-1)
4	+5	YE	DMS-VDD (C1-1)
5	-15	RE	PSW- -15 (C1-3)
6	-15	RE	SA- -15B (C1-3)
7	+15	PK	PSW-+15 (C1-5)
8	SO	SBR	SA-SI (C4-2)
9	E	GR	DMS-Vss (C1-7)
10	E	-	-

C11			
Pin No.	Pin Name	Wire Color	Destination
1	V1	BE	DMS-V1 (C1-4)
2	V2	VI	DMS-V2 (C1-3)
3	V3	GY	DMS-V3 (C1-6)
4	V4	WH	DMS-V4 (C1-2)
5	V5	GG	DMS-V5 (C1-5)

CN1			
Pin No.	Pin Name	Wire Color	Destination
1	E	BL	PU-EP
2	10B	OR	FU-S1
3	10A	OR	PT-S4

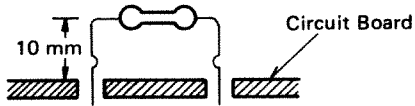
CN2			
Pin No.	Pin Name	Wire Color	Destination
1	-19A	RE	PT-S2
2	-19B	RE	PT-S3
3	+19B	BE	PT-S1
4	+19A	BE	PT-S6



SA CIRCUIT BOARD

Notes)

1. Circuit Board: LC28780 2
2. Integrated Circuits  
 IC1 : YM60800  
 IC2 ~ 4 : iG03290  
 IC5 ~ 7 : YM35100  
 IC8 ~ 12 : NJM4558  
 IC13 : TC4016BP
3. Transistors  
 Tr1 ~ 6 : 2SC2320L (Low Noise Type)  
 Tr7, 9, 14 : 2SC458  
 Tr8, 15 : 2SA509  
 Tr10 : 2SA1015  
 Tr11 : 2SA1015  
 Tr12 : 2SC2120  
 Tr13 : 2SA950
4. Field Effect Transistor  
 FET1 : 2SK105
5. Diodes  
 D1 ~ 4 : 1S1555
6. Resistors Marked \*  
 Flame Proof Carbon Film Resistor  
 Mount as shown below



C1

Pin No.	Pin Name	Wire Color	Destination
1	EC	BL	DM-E (C8-3)
2	EC	—	—
3	-15B	RE	DM-15 (C10-6)
4	+15	PK	DMS+15 (C2-1)
5	+15	PK	PSW+15 (C1-6)
6	+15	PK	CPA+15 (C1-1)
7	+15	PK	TS+15 (C1-1)

C2

Pin No.	Pin Name	Wire Color	Destination
1	-15	RE	PSW-15 (C1-4)
2	-15	RE	CPA-15 (C1-2)
3	-15	RE	TS-15 (C1-5)
4	-15	RE	DMS-15 (C2-5)
5	E	BL	DM-E (C8-4)
6	E	BL	DM-E (C8-5)
7	E	BL	CPA-E (C2-1)
8	E	BL	TS-E (C1-4)
9	E	BL	SCS-E (C1-1)
10	E	—	—

C3

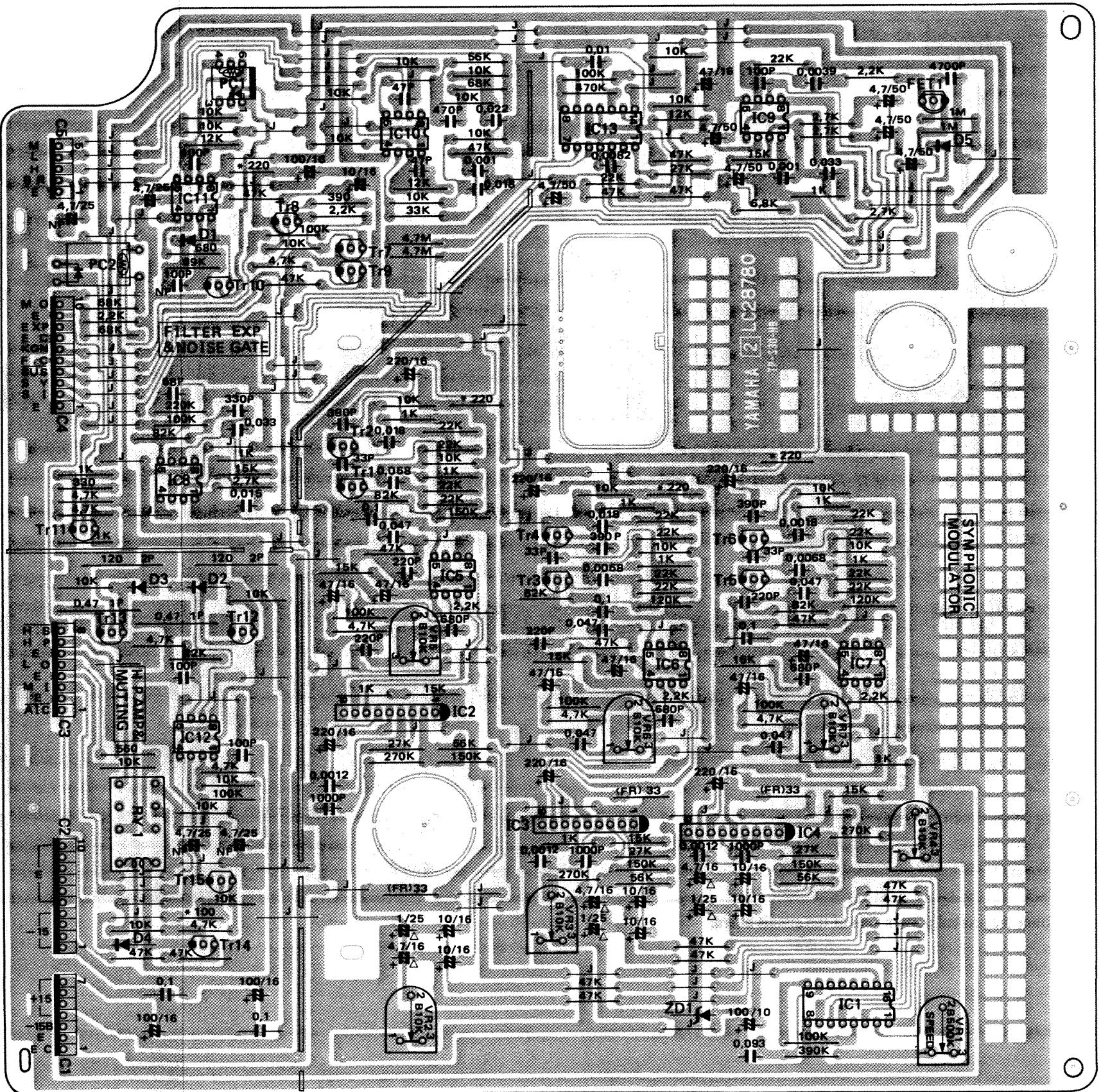
Pin No.	Pin Name	Wire Color	Destination
1	AIC	WH	DM-AIC (C9-5)
2	E	S GR S	CPA-EM (C3-3)
3	MI	S GR	CPA-MO (C3-2)
4	E	S OR S	JK-E (C1-9)
5	LO	S OR	JK-LO (C1-10)
6	E	BL	JK-E (C1-3)
7	HP	YE	JK-HP (C1-4)
8	H-S	SB	DMS-H-S (C2-2)

C4

Pin No.	Pin Name	Wire Color	Destination
1	E	S BR S	DM-SO (C10-8)
2	SI	S BR	DM-SY (C9-3)
3	SY	YE	DM-SY (C9-3)
4	SUS	SB	DM-SUS (C9-4)
5	F-C	BR	DMS-F-C (C2-3)
6	KON	GY	DM-KON (C9-1)
7	E	S BE S	JK-E (C1-7)
8	EXP	S BE	JK-EXP (C1-8)
9	E	S VI S	—
10	MO	S VI	CPA-MI (C3-4)

C5

Pin No.	Pin Name	Wire Color	Destination
1	E	S YE S	CPA-BR (C3-8)
2	BR	S YE	CPA-H (C3-7)
3	H	OR	CPA-L (C3-6)
4	L	BR	CPA-M (C3-5)
5	M	RE	CPA-M (C3-5)



View from the printed pattern side of the circuit board.